

CONTACT LISTS

Once you have entered your contacts into PastPerfect, you will need a way to organize them. The Contacts List Manager is the way to group contacts together, build specific lists, see the number of memberships, track overdue members, and work with your contact data in the ways most useful to you. You may put contacts on lists using the query builder in the Contacts Lists section, or you may put contacts on lists directly from individual contact screens.

The Contact Lists section gives you the ability to view and print lists of contacts, or export them to MS-Excel. You can print mail merge letters, labels, envelopes, and send emails for contacts on your lists. Using mapping software, you can map addresses of all contacts on a list, allowing you to see groups of contacts on a map. You may also perform global changes for all contacts on a list.

Contact Lists may be managed for different users and projects through folders. Lists may be merged together, then separated once combined. With Security activated, there are also controls to make lists public or private, and lock lists so they may not be changed.

CONTACTS LIST MANAGER

To begin creating and managing Contact Lists, click the **Contact Lists** button on the Main Menu. The **Contacts List Manager** screen has two sections: **User Defined Lists** and **Fixed Lists**.

Each User Defined List (shown in Figure 21-1) is created by your organization, based on your organization's needs. These User Defined Lists are organized by the **User Defined List Folders** located on the left.

The **Fixed Lists**, on the right side of the screen, are created and updated by PastPerfect. As soon as you begin to add contacts and create memberships, the Fixed Lists become populated. As your contacts change, these lists are updated automatically.

On the left side of the screen is the Sidebar, which contains tools for creating and managing your contact lists.

Contacts List Manager

User Defined Lists		Fixed Lists	
User Defined List Folders	All Lists	List Name	Records
<View All Lists>	◆ Annual Volunteer Picnic List	All Contacts	37
Activity Lists	◆ Christmas Party List	Alist	5
Director's Lists	◆ Contacts by Zip	Blist	8
Mailing Lists	◆ Director's Circle Dinner List	Docents	2
Member Lists	◆ Docent Education Newsletter	Employees	0
Volunteers	◆ Email Newsletter	Students	0
	◆ Exhibit Opening List	Volunteers	0
	◆ Explorer's Club Dance	Gold Donors	5
	◆ High Dollar Donors	Silver Donors	8
	◆ Lunchtime Lecture Series	Bronze Donors	16
	◆ Paid Up Billing Members, Not Donated Since 2007	Donated	32
	◆ Potential Members	Never Donated	5
	◆ Senior Field Trips	Contacts that have Pledged	31
		Contacts that have Never Pledged	6
		Contacts with Membership	31
		Contacts without Membership	6
		Billing Members	26
		Non-billing Members	5
		Memberships Overdue	13
		Memberships Inactive or not Overdue	13
		Life Members	1
		Active Memberships	23
		Inactive Memberships	3
		Current Memberships	11
		Stop Mail	1

Legend

- ◆ Public List
- ◆ Private List
- ◆ Public - Locked List
- ◆ Private - Locked List

Click on a List Folder to view only those lists in the selected folder. Right click a Fixed List for details. Exit

Figure 21-1 Contacts List Manager

FIXED LISTS

Since the Fixed Lists are fairly simple, we will examine them first. The Fixed Lists will always display on this screen, no matter what folder is selected under **User Defined List Folders**. They cannot be locked or made private. The number of records on each list displays to the right of the list name, as seen in Figure 21-2. The records on the lists are updated every time you view this screen.

Figure 21-2
Fixed Lists

Fixed Lists	
List Name	Records
All Contacts	37
Alist	5
Blist	8
Docents	2
Employees	0
Students	0
Volunteers	0
Gold Donors	5
Silver Donors	8
Bronze Donors	16
Donated	32
Never Donated	5
Contacts that have Pledged	31
Contacts that have Never Pledged	6
Contacts with Membership	31
Contacts without Membership	6
Billing Members	26
Non-billing Members	5
Memberships Overdue	13
Memberships Inactive or not Overdue	13
Life Members	1
Active Memberships	24
Inactive Memberships	2
Current Memberships	11
Stop Mail	0

TIP

To view an explanation of a list and to get the filter statement used to create the list, right click on the list.

All Contacts - This is the list of all contacts.

A List and **B List** - These lists can be renamed by going to the Main Menu | Setup | Custom Fields | Contacts. Contacts are placed on this list by checking the appropriate box on the contact screen.

Docents, Employees, Students and Volunteers - Contacts are placed on these lists by checking the appropriate box on the contact screen.

Gold, Silver and Bronze Donors - PastPerfect will automatically place donors on these lists based on their total amount of donations. Donation amounts for each level are set by going to the Main Menu | Setup | Contacts | General Information.

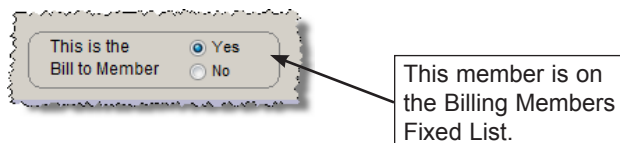
Donated and Never Donated - If a contact has ever made a donation, that contact is automatically placed on the **Donated** list. If the contact has not made a donation, the contact is on the **Never Donated** list.

Contacts that have Pledged and Contacts that have Never Pledged - If you have entered a pledge for a contact, he/she will be on the **Contacts that have Pledged** list. If a contact has not made a pledge, he/she will be on the **Contacts that have Never Pledged** list.

Contacts with Membership and Contacts without Membership - If a contact is a member (or has been a member), he/she will be on the **Contacts with Membership** list. The memberships do not need to be paid up or active to be on this list. This is the total count of all contacts with memberships. If one membership has three associated contacts, each contact will be counted. If a contact has not joined as a member, he/she will be on the **Contacts without Membership** list.

Billing Members and Non-billing Members - Each membership has one member designated as the Bill to Member. On this membership record, you will see a "Yes" for the statement "This is the Bill to Member."

Figure 21-3
Billing Members
section of the
Membership
screen

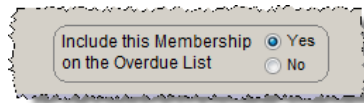


Any contact with "Yes" will be on the **Billing Members** list. This list would be used for sending newsletters or renewals to members, since it includes just one person per membership. You will send one piece for each membership. All the other contacts who are members, but are not the Bill to Member, will be on the

Non-billing Members list. The number of members on these two lists, when added together, will equal the number of Contacts with Membership.

Memberships Overdue and **Memberships Inactive or Not Overdue - Memberships Overdue** is all the Billing Members who are Active, and are overdue as of today and are not Life Members. On their membership records, they are set to “Yes” for the statement “This is the Bill to Member,” they are set to “Yes” for the question “Include on Overdue List,” and their Paid Thru date is earlier than today’s date.

Figure 21-4
Overdue List
section of the
Membership
screen

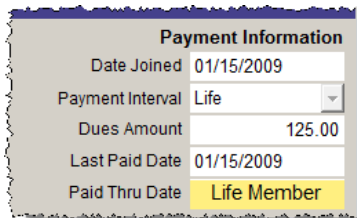


When sending overdue notices to members, this is often the list you will use.

The **Memberships Inactive or Not Overdue** list contains Billing Members who are Inactive or memberships that are paid up through today, or are Life Members. Contacts on this list may be Active or Inactive members. The number of members on these two lists, when added together, will equal the number of Billing Members. These lists are updated automatically.

Life Members - These are the members who have their payment interval set to “Life” on their membership records. These members can be excluded as a group from lists and mailings (i.e. renewals).

Figure 21-5
Payment
Interval on the
Membership
screen



Active Memberships and **Inactive Memberships** - Memberships that have “Yes” to answer the question “Include on Overdue List” on their membership screen will be on the **Active Memberships** list, as seen in Figure 21-6.

Figure 21-6
Overdue List
section of the
Membership
screen



Memberships which have “No” set to the question “Include on Overdue List” on their membership screen will be on the **Inactive Memberships** list. These lists are not automatically based on membership expiration dates.

Current Memberships - These are Billing Members who are paid up as of today, or are Life Members. This list is updated automatically.

Stop Mail - All contacts who have the Stop Mail box checked on their contact records will be on this list.

Figure 21-7
Stop Mail
section of
the Contact
screen



Lists, letters, labels, envelopes, and emails will not be generated for these contacts, unless you specifically tell the program to include them.

USER DEFINED FOLDERS AND LISTS

Unlike the Fixed Lists, User Defined Lists are created in and managed by folders. You may add folders for each user, or for projects, or any other arrangement you need. Lists are created within folders. You may view all lists, or just lists in one folder. The User Defined Lists are built by you to serve the needs of your organization. These lists may be viewed by only the list manager, if you have chosen to make lists private and security is activated.

CREATING FOLDERS AND LISTS

The first step in creating and managing User Defined Lists is creating folders. Please click **Create a New Folder** from the Sidebar and enter a new folder name. Click **OK**. Add as many folders as needed.

Once folders are in place, you are ready to create User Defined Lists. Click **Create a New List** from the Sidebar. Choose a **Folder** and **List Manager** from the drop-down menus on the **Lists** screen. If Security is not activated, the List Manager drop-down menu is built from the Users authority file. If Security is activated, the List Manager drop-down menu contains the names of the Users set up in security. If you do not want to assign a manager, you may choose the option “<Anyone>” from the list.

NOTE

The Users authority file is managed from Main Menu | Setup | Authority Files | Common Screens | Users. You can add, edit and delete Users from this setup screen.

Figure 21-8
Create a New
Contacts List
screen

Enter a **List Name** and **Description**, and check if you wish to make this list private or locked. A **Private List** may be viewed only by the selected List Manager;

please note that Security must be activated to turn on this restriction. For more information about setting up and activating Security, please review *Chapter 3 - Getting Started*. When you check **Locked**, contacts may not be added to or deleted from this list. For a new list, you will need to leave it unlocked until you add the desired contacts to the list. Click **OK**. Your new list will appear in the **All Lists** folder and in the specified folder under User Defined Lists.

MANAGING LISTS

On the Contact List Manager screen, the Sidebar's Manage section has tools to manage the User Defined Folders and Lists. They enable you to add contacts to a list, delete a list, delete an empty folder, combine lists, subtract contacts on one list from another list, change list information, update summer/winter addresses, and view the mailing log.

Adding Contact Records to a List

After you create a new list, the next step is to add contact records to that list. A quick way to do this is to use a query, which you may do by clicking on **Add Records to Selected List**. At the **Query** screen, you can build a filter statement to select records for the list.

To build a filter statement to select records, use the drop-down menus for **Field** and **Condition** and enter text in **Value**. Then click the **Add to Statement** button. You may add more than one statement to your query. Once a filter statement has been created, run the query to select the records. Review the records in **Query Results**. You may remove records from the results list by clicking in the column on the left, then clicking **Removed Marked Records**. Then click **Add Selected Contact Records to List**.

TIP

You may choose the fields that are available in the Field drop-down menu by going to the Main Menu | Setup | Query Fields section.

Below are two examples of User Defined Lists which may be helpful in understanding building filter statements and, later, the view and action options.

Example A: You need to create a list of contacts with email addresses to email them your newsletter. Select the field “Email” from the **Field** drop-down menu. Then from the **Condition** drop-down menu, select “Is not empty.” Notice that there is no longer an option to enter a Value. Click the **Add to Statement** button, then **Run Query to Select Records**. Your filter will be saved when you exit. Your query results will appear in the grid at the bottom of the screen, as in Figure 21-9. Review the results and remove any contacts you do not want included on the list. Mark records for removal by clicking in the narrow, empty column at the left of the grid. The cell for that record will turn black. Then click the **Remove Marked Records** button. It will delete all marked records at once. When you have the records you want on the list, click **Add Selected Contact Records to List**. Click **Exit**.

Query

Add Records to Contact List with Query Email Newsletter

Build Filter Statement Records on list: 0

Select Field, Condition, enter text in Value and click **Add to Statement** to build a filter statement. Remove all records from list

Field: Condition: Value: and or Match Case

Add to Statement

Filter Statement: Clear Filter

Run Query to Select Records

Add Selected Contact Records to List

Query Results Matching records found = 31 Clear Results

ID#	Name and Title	Company	First Name	Last Name
1	Richard Hilton, Chief Software Architect	PastPerfect Software Company	Richard L.	Hilton
2	Mary Parr, President	PastPerfect Software Company	Mary	Parr
3	Melissa Potter	Textile Technology Inc.	Melissa	Potter
4	Jean Anne Johnson	First Interstate Savings and Loan	Jean	Johnson
6	Dr. Karen E. Slater	Cheltenham Clinic	Karen	Slater
9	George M. Kittridge	Kittridge Ranch	George	Kittridge
12	Juanita Estevez	Arte de San Juan	Juanita	Estevez
13	Eric J. Jenkins	Jenkins Motorboat Co.	Eric	Jenkins
14	Ms. Laura Jenkins, Director	Cheltenham Manor Historic House Museum	Laura	Jenkins
16	Millicent Carter, CEO	Perfect Shoe Company	Millicent	Carter
17	Lennox O. Rombaugh	Rombaugh Auction Ltd.	Lennox	Rombaugh
18	Gary Easton	GoEast Enterprises	Gary	Easton
20	Jennifer Grimes	Canterbury Publishing, Inc.	Jennifer	Grimes
21	Ms. Theresa Underwood	Bristol Public Library	Theresa	Underwood
22	Kate Baker, Owner	Picture Perfect Photo Studio	Kate	Baker

Figure 21-9 Run Query to Select Records Example A

Now that you have a list, you can easily send an email to all the contacts on the list at one time. Please see the Printing and Exporting Lists section of this chapter for further instructions.

Example B: You would like to create a list of paid-up billing members who have not made monetary donations in the past two years, so you can find out who you should solicit for donations. To do this, you can build a compound filter statement and run a query. First select the field "Bill to Member" from the **Field** drop-down menu. To do this quickly, click the down arrow, then press the "B" key on your keyboard to see "Bill to Member" and other fields beginning with "B." Select the Bill to Member field. Next, use the **Condition** drop-down menu and choose "Equals." Please enter the number "1" in the **Value** box. Click **Add to Statement**.

Select the "and" radio button to create a statement where all conditions must be met. From the **Field** drop-down menu, select the field "Paid thru." You can do this by clicking on the down arrow and pressing the "P" key on your keyboard, or scroll through the field list until you find the field and click on it to select it. From the **Condition** drop-down menu, select "Greater than or equal to," then in the **Value** field, type in today's date in MM/DD/YYYY format, such as 09/14/2009. Click **Add to Statement**. From the **Field** drop-down menu, select the field "Last Donated." From the **Condition** menu, select "Less than or equal to," and enter the date that would be 2 years prior in the **Value** field, such as 09/14/2007. Click **Add to Statement**. Review the filter statement and then click the **Run Query to Select Records** button. The results will appear in the grid on the bottom half of the screen. Click **Add Selected Contact Records to List** to create the list, seen in Figure 21-10. The filter statement will be saved when you exit this screen.

Query

Add Records to Contact List with Query Paid Up Billing Members, Not Donated Since 2007

Build Filter Statement Records on list: 2
Remove all records from list

Select Field, Condition, enter text in Value and click **Add to Statement** to build a filter statement.

Field Condition Value and or Match Case
Add to Statement

Filter Statement Clear Filter

Bill to Member=Equals 1-and
Paid thru-Greater than or equal to-09/14/2009-and
Last Donated-Less than or equal to-09/14/2007

Run Query to Select Records
Add Selected Contact Records to List

View or Modify Filter Statement Syntax Delete Selected Filter Statement Line

Query Results Matching records found = 2 Clear Results

ID#	Name and Title	Company	First Name	Last Name
21	Ms. Theresa Underwood	Bristol Public Library	Theresa	Underwood
22	Kate Baker, Owner	Picture Perfect Photo Studio	Kate	Baker

Figure 21-10 Run Query to Select Records Example B

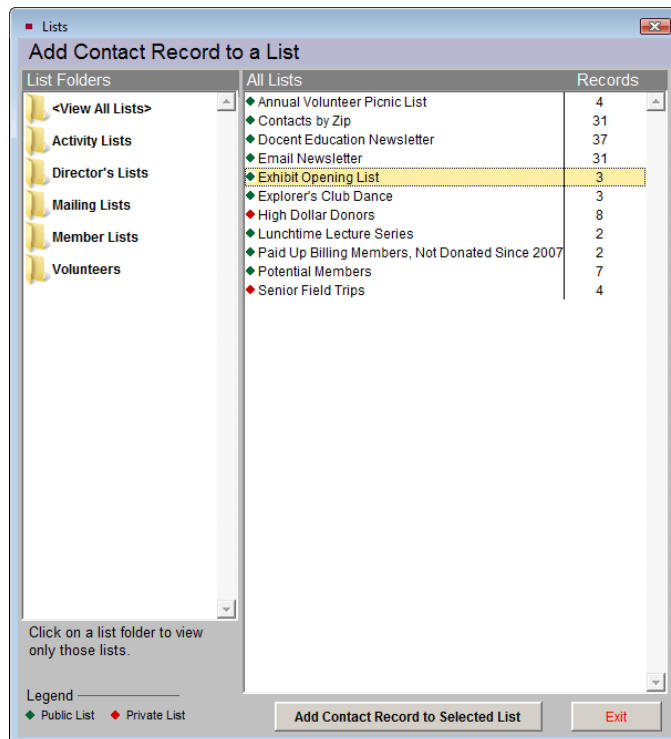
You can now view records on this list, decide if there are any contacts you want to remove from the list, and print mail merge letters and labels for these contacts.

Are members who have not donated in the last couple of years located near your institution? You can see where these contacts are located geographically using the “Map Contact List” function. Please see the Map Contact List section later in this chapter for instructions.

Adding Contacts to a List from Contact Records

You may also put contacts on a list from contact records. On a contact record, click the **Mailing Address** button in the Sidebar under Screen View. On the bottom left side of the screen, you will see all the **Contact Lists** on which this contact has been placed. To add this contact to a list, click the **plus sign** button to the left of the lists, or click the button on the Sidebar for **Add this Contact to a List**. On the next screen, seen in Figure 21-11, click on the list to which you want to add the record, then click the **Add Contact Record to Selected List** button at the bottom of the screen.

Figure 21-11 Add Contact Record to a List screen



Updating Existing User Defined Lists

Since the filter statement is saved for each User Defined List, you can quickly refresh your lists. For example, if you have a Recent Donors list, comprised of contacts who made their last donation during the month of March, and you now want to get a list of contacts who made their last donation during the month of April, you can update your list instead of creating a new list.

To update the list, on the Contacts List Manager screen, highlight the list and click **Add Records to Selected List**. Since the people who donated last in March are still on the list, click the **Remove all records from list** button at the top of the screen. This will clear the list so you can add just the people you want. The filter statement last used will appear in the **Filter Statement** area.

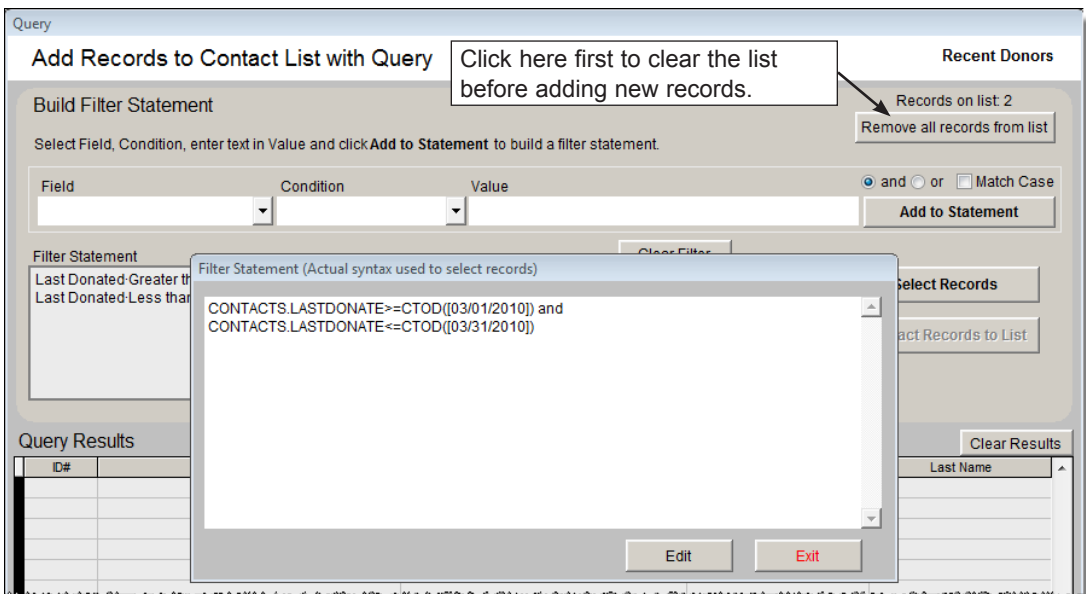


Figure 21-12 Modify Filter Statement

To update your filter, click **View or Modify Filter Statement Syntax**. The Filter Statement screen seen in Figure 21-12 will appear. Click **Edit** to modify the text. Change the date in the first line to "04/01/2010" and change the date in the second line to "04/30/2010" to include just contacts who made their last donations in April. Then click **Save** and **Exit** to save the change to the filter. Click **Run Query to Select Records**, then **Add Selected Contact Records to List** to put contacts who last donated in April on the list. Once you exit from the Query screen, you can send letters or print a list of these selected contacts.

Deleting, Merging and Subtracting Lists

The following are additional tools for managing User Defined Lists.

Delete Selected List - Select the list to be deleted from the View All Lists folder or other folders. This option permanently removes the list from both Contacts List Manager screen and the Contact Lists view in each contact record.

Delete Selected List Folder - This option allows you to delete a folder that does not contain lists. If the folder has lists, please change each list's **List Folder** using the **Change List Name or Parameters** option. Or if the list is no longer needed, it may be deleted using **Delete Selected List**. Once the folder is empty, it too may be deleted.

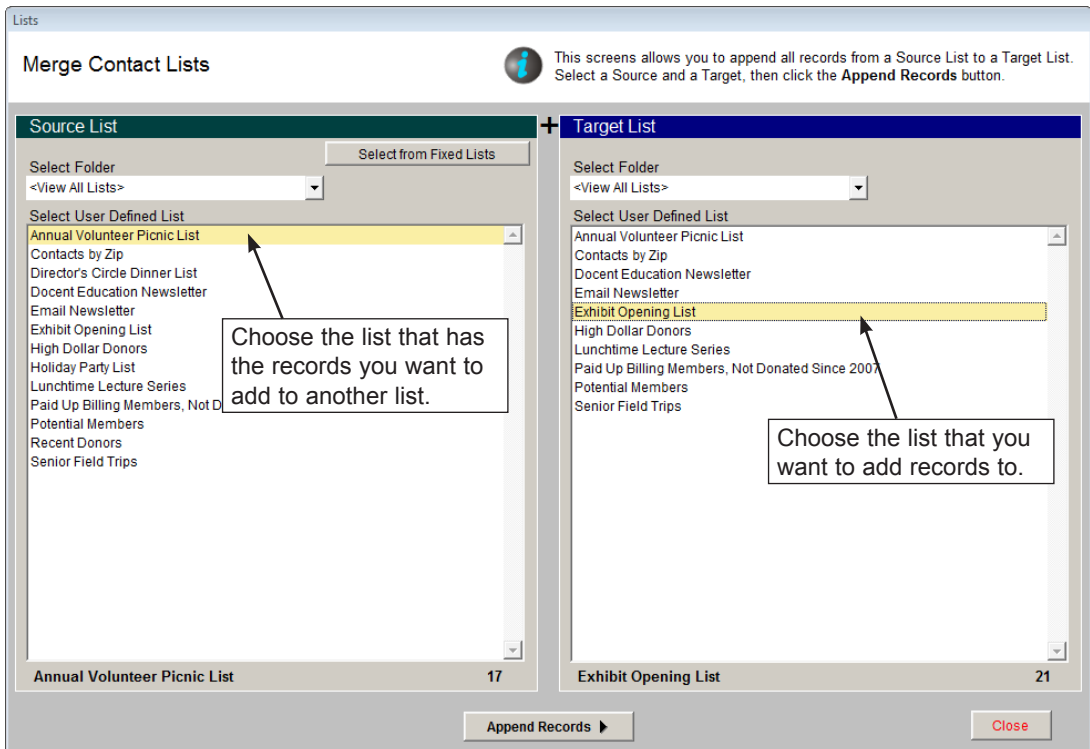


Figure 21-13 Merge Contact Lists

Merge Lists - You can combine lists by adding all records from a Source List to a Target List. On the **Merge Lists** screen, seen in Figure 21-13, please choose the **Source List** from the list on the left. This is the list you will add to another list.

If you would like to combine a Fixed List with another list, click the **Select from Fixed Lists** button at the top of the Source List section. Then choose the **Target List** from the list on the right. This is the list to which you will add the records. You will see the number of records on both the Source List and the Target List. When you have verified these are the correct lists, click the **Append Records** button. You will be prompted with the number of new records that will be added to the Target list, and how many records already exist on both the Source List and Target List that will not be added. If you wish to combine multiple lists, select another Source List from the left, keep the same Target List on the right, and click **Append Records** again. *Warning: It is best to create a new list as the Target List and append Source Lists to it, rather than using an existing list. Creating a new list allows you to have the original lists available later.*

Subtract Lists - You may remove all contacts from a Target List that appear on a Source List. On the **Subtract Lists** screen, seen in Figure 21-14, from the **Target List** on the left, select the list from which you want to subtract records. Select the **Source List** on the right with the records to subtract. You may select a Fixed List by clicking the **Select from Fixed Lists** button at the top of the Source List section. You will be removing records from the Target List. You will see the number of records on both the Source List and the Target List. When you have verified these are the correct lists, click the **Subtract Records** button. You will be prompted with the number of records that will be removed from the Target List, and how many records did not exist on the Source List to be removed from the Target List.

Change List Name or Parameters - This screen allows you to change the List Folder, List Manager, List Name, Description, and private and locked settings. To view this screen, first click on the list name, then click the **Change List Name or Parameters** button.

Change Folder Name - To change the name of an existing folder, click on the folder name, then click the **Change Folder Name** button. Enter the new name, then click **OK**.

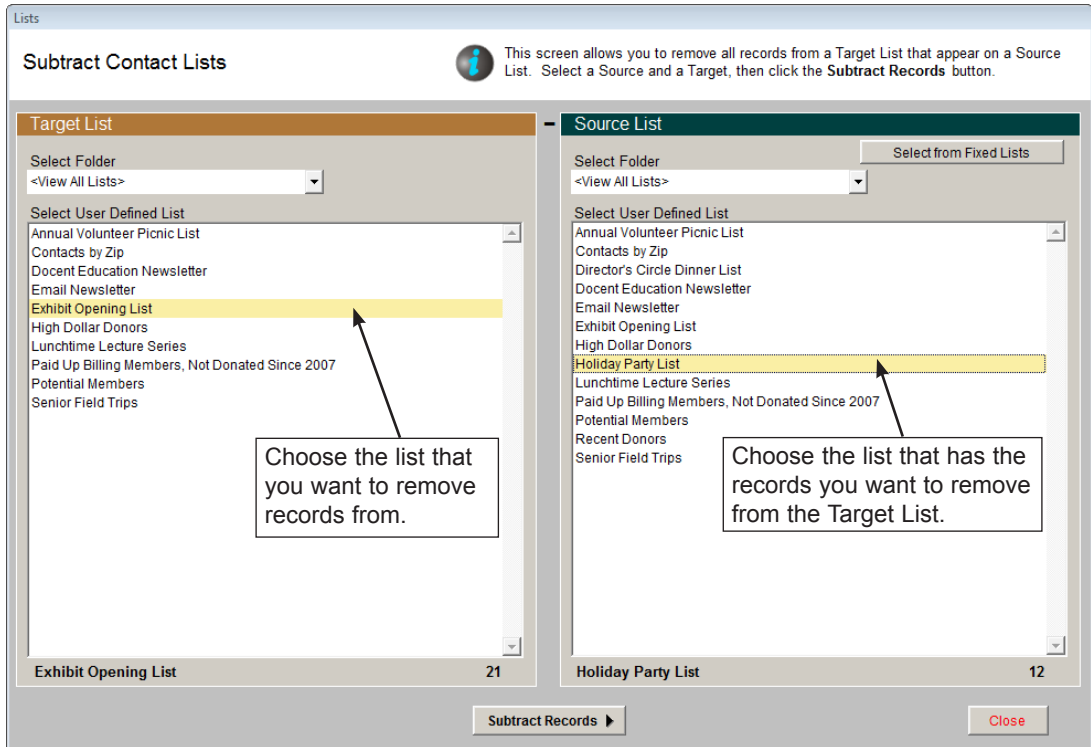


Figure 21-14 Subtract Contact Lists

VIEWING A LIST

From the **List Manager** screen, you can select a User Defined List or Fixed List and view its contacts in a variety of formats. To view a list, click once on the list, then use the **View Selected List** button in the View section of the Sidebar. You can also double click on the list to advance to the **View Contact List** screen. You must have records on the list before you can view it.

TIP

You may change the sort order for the list by clicking on the column header of the field by which you want the list sorted.

View Contact List

List Actions

View Records

Print, Export and Email

Map Contact List

Global Change

Narrow List

Reset Narrowed List

Email Newsletter

Records Total=31

Click column header to change sort order

ID#	Name and Title	Address1	City	State	Zip	Donations
1	Richard Hilton, Chief Software Architect	300 N. Pottstown Pike	Exton	PA	19341	1550.00
2	Mary Parr, President	300 North Pottstown Pike	Exton	PA	19341	3575.00
3	Melissa Potter	1234 North Main Street	Perfectown	HI	96345	975.00
4	Jean Anne Johnson	56433 Newgrove Avenue	Westgrove	PA	19345	3150.00
6	Dr. Karen E. Slater	5678 Penney Lane	Cheltenham	PA	19544	1250.00
9	George M. Kittridge	68000 State Route 11	Perfectown	PA	19588	38000.00
12	Juanita Estevez	5596 Hyde Park	Philadelphia	PA	19576	3700.00
13	Eric J. Jenkins	4532 South Hill Street	Cheltenham	PA	19654	5500.00
14	Ms. Laura Jenkins, Director	4532 South Hill Street	Cheltenham	PA	19654	2295.00
16	Millicent Carter, CEO	3456 South Parsable Drive	Perfectown	PA	19876	16400.00
17	Lennox O. Rombaugh	4589 W. Broad Street	West Chester	PA	19341	3200.00
18	Gary Easton	32654 West 58th Street	Pastville	PA	19731	925.00
20	Jennifer Grimes	5542 Northwest "J" Street	Cheltenham	PA	19345	1000.00
21	Ms. Theresa Underwood	6577 Elm Street	Bristol	PA	19343	0.00
22	Kate Baker, Owner	100 South High Street	Pastville	PA	19382	1000.00
23	Neil Packwood, Manager	12566 Elmwood Drive	Perfectown	PA	19811	6000.00
24	Ian J. Smithson, President	1300 North Placer Avenue	Westgrove	PA	19654	9600.00
27	Henry T. Hanover	1254 Pomeroy Ave.	Pastville	PA	19345	4000.00
29	Erwin J. Tucker	3456 South M. Street	Exton	PA	19341	2650.00
31	Annabeth L. Edwards	302 East Penny Court	Exton	PA	19341	400.00
32	Gail M. Gibson	6754 W. Center Street	Pastville	PA	19342	100.00
33	Brian L. Gibson, VP Operations	4543 W. 67th Avenue	Exton	PA	19341	10150.00
36	Barbara W. Margolis	5466 S. 65th Ave.	Armbruster	PA	19887	1250.00
37	Hap Kramer	2343 High Street	Perfectown	PA	19234	22700.00
38	Harrison G. Spencer	6789 Oakleaf Drive	Tamaqua	PA	19345	300.00
39	Louise Mae Tucker	3456 South M. Street	Exton	PA	19341	3200.00
41	Ernestine McMillan Hilton	125 Main Street	Tamaqua	PA	19833	2750.00
43	Jason Harvey, Director	1290 West Plum Street	Plumsteadville	PA	19767	0.00
44	Leo Feldstein	675 Ranstead Street	Philadelphia	PA	19355	0.00
45	Ms. Patricia J Babbitt	6751 West River St	Tamaqua	PA	19444	500.00

Click here to mark results for removal Remove Marked Records From List

Exit

Figure 21-15 View Contact List screen

The **List Actions** section of the Sidebar has options for viewing the contacts on the list, printing mailings for the contacts, mapping the contacts on the list, performing a global change for all records on the list, as well as temporarily narrowing down the records on the list.

NARROWING A LIST

Once you have a list created, you may want to perform actions for a subset of people on that list. For example, you want to send an email to your active members who are paid through a certain date range, or you want to send a letter to contacts on a user defined list that have a specific zip code. You can use the Narrow List function to target a subset of people on an existing list. The Narrow List function temporarily narrows your list to the selected subset so you can perform your desired action, then it returns to the full list the next time you view it.

Click the **Narrow List** button to bring up the **Narrow Contact List** screen, seen in Figure 21-16. This screen will be filled in with the widest range of information for the people on the list. For example, if the last name that comes first alphabetically is “Baker” then that will show up in the **From** field next to **Lastname**. If the last name that comes last alphabetically is “Underwood” then that will show up in the **Thru** field next to **Lastname**.

Figure 21-16
Narrow Contact
List screen

Email Newsletter		You may select field ranges below to further narrow the list.	
Group	From Corporate Partners Thru Potential Member	Field 01	From Thru
Firstname	From Annabeth L. Thru Theresa	Followup Date	From / / Thru 08/16/2008
Lastname	From Baker Thru Underwood	Id#	From 1 Thru 46
Company	From Thru The Better Girdle Company, Inc.	Membership Type	From Thru Senior
Membership Name	From Thru Underwood, Theresa	Membership Subtype	From Thru Retired
City	From Armbruster Thru Westgrove	Joined	From / / Thru 01/15/2009
State	From HI Thru PA	Last Paid	From / / Thru 06/18/2010
Zipcode	From 10344 Thru 96345	Paid thru	From / / Thru 06/26/2011

Narrow List Cancel

If you would like to narrow your list to members who are set to expire in a certain time range, enter that range in the date fields next to **Paid Thru**. If you want to narrow your list to contacts in a certain zip code, enter the zip code in both the **From** and **Thru** fields next to **Zipcode**. Then click **Narrow List**. You will return to the View Contact List screen and your list will show just the contacts who match your ranges. The screen in Figure 21-17 displays 7 of the 31 contacts who have the zip code of “19341.” If you want to reset the list to show all contacts, click **Reset Narrowed List** under List Actions. You may narrow the list again using different parameters. If you do not click **Reset Narrowed List** and you exit from the View Contact List screen, the list will automatically reset.

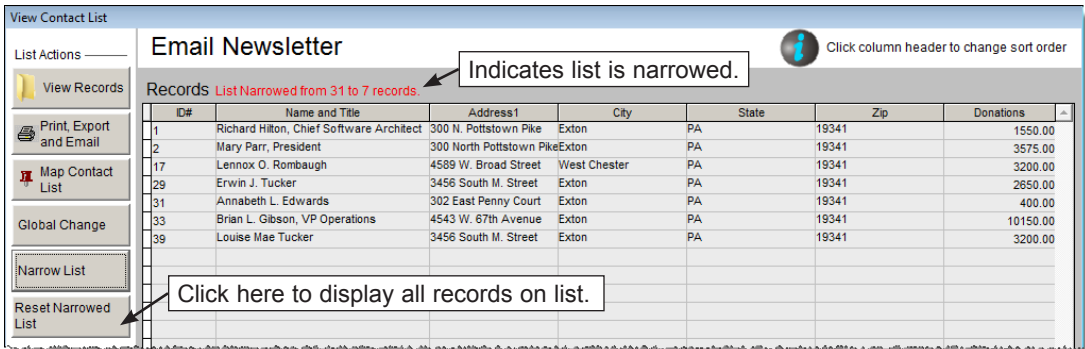


Figure 21-17 View Contact List screen displaying narrowed list.

VIEW RECORDS

To browse through the contacts' full screens, click the **View Records** button. You can edit, spell check, print individual letters, post donation or dues payments, and perform other functions while viewing the selected records.

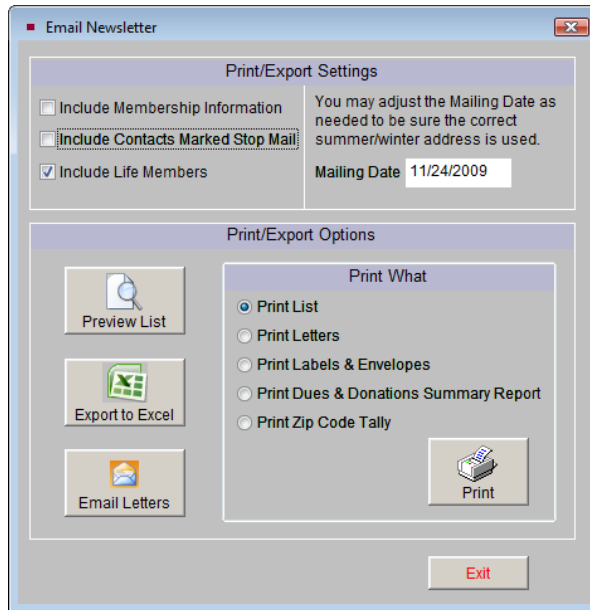
PRINTING AND EXPORTING LISTS

The **Print, Export and Email** button allows you to print the contact list, export the list to Excel, or print letters, labels and envelopes for people on the list. You may also send a mass email to everyone on the list with an email address. Lists will be sorted in the order you selected by clicking a column header on the View Contact Lists screen. When you click the **Print, Export and Email** button, the next screen, seen in Figure 21-18, will give you options.

If you are printing a list and you would like it to include Membership information such as membership type, last paid date and paid thru date, check the box next to **Include Membership Information**. You may choose to include contacts with Stop Mail by placing a check in the box next to **Include Contacts Marked Stop Mail**. To include Life Members, place a check in the box next to **Include Life Members**. If you use primary and secondary addresses, to ensure you have the correct addresses, make sure the date in the **Mailing Date** field is the date you are sending the mailing.

Once you have made your selections, to preview the selected list (with or without Membership Information), click the **Preview List** button. If you select the "Print List" radio button and click the **Print** button, this list will be printed.

Figure 21-18
Print/Export
Options screen



You may export the list to an Excel file by clicking the **Export to Excel** button. The file will open in HTML using your computer's MS-Excel. The file is saved in HTML (.htm) format and stored in the PP5Reports folder on your Local Disk drive (usually C:/). If you wish to save it as an XLS file, go to Save As in the Excel File menu and choose "Microsoft Office Excel Workbook" as the file type.

You have the option to print a Dues & Donations Summary Report for all contacts on the list. This report will list the total dues and donations given by each contact for a range of 10 years.

You may also print a Zip Code Tally, which will count the number of contacts within each 5-digit zip code, or with the same first three numbers of their 5-digit zip code. The 3-digit code tally can also be used to tally Canadian and UK postal codes.

From this screen you may also print letters, labels and envelopes and send emails. Following through with our "Example A" from earlier, you would use the **Email Letters** function to send a mass email to all the contacts on your list. Please see *Chapter 22 - Letters, Labels & Email* for more information about printing mail merge letters, as well as sending email to contacts.

TIP

In Main Menu | Setup | Workstation Settings, you can enable multiple output options when printing any PastPerfect report. Check the Output Reports to PDF, Word, HTML, etc. box to have this option. You will still be able to print to an ink jet or laser printer as usual.

MAP CONTACT LIST

The **Map Contact List** button enables you to create map data files which may be imported into mapping programs such as Microsoft Streets & Trips, Microsoft MapPoint and Google Earth Pro. You can create a map point for each contact on the list, then launch your mapping program, import the data, and display a map.

NOTE

You will need to install the Microsoft or Google mapping software and enter the path and file name to launch the mapping program. Please go to Main Menu | Setup | Mapping to enter the path and file name of your installed mapping program.

Let's look at an example of how to use the Map Contact List action. From our "Example B" earlier in the chapter, once the list of paid-up billing members who have not donated in the last two years has been created, you may review the list. You can use the View Lists tools to print a report with each person's contact information and export the list to MS-Excel for distribution to your solicitors. To get a sense of where these contacts are located, you can use the Map Contact List function to pinpoint all the contacts on a map. You can see if you need to target contacts in certain geographic areas. You can even print the map so that your organization's solicitors can reach out to the potential donors in their areas.

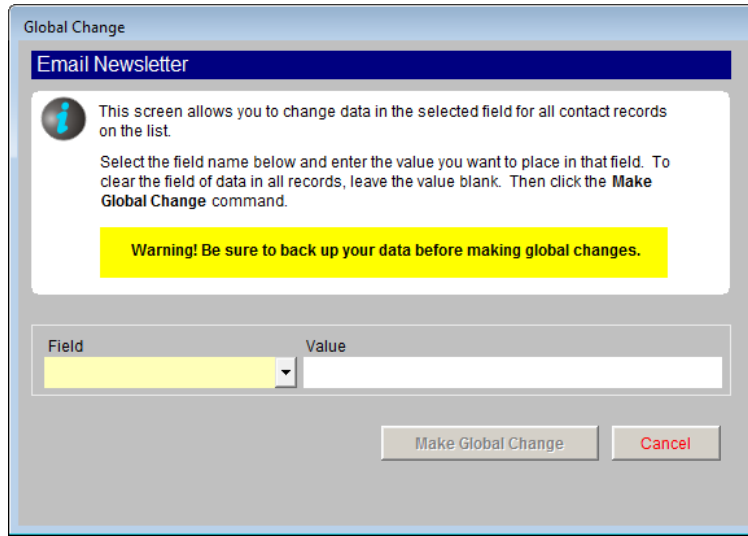
GLOBAL CHANGE

The **Global Change** function is the most powerful tool in Contacts Lists. This option enables you to make changes to all of the records on the list at once. Please use caution when performing this action. *It is strongly suggested that you make a Hard Drive Backup before you begin.*

To make a global change, on the screen seen in Figure 21-19, first use the **Field** drop-down menu and select the field to be changed. Next, enter the exact value

you want to enter in that field for all records. If an authority file is available for the field, you may right click or press **F7** to view the authority file and choose your term from the list. Once you are sure the value is exactly as you want it, click **Make Global Change**.

Figure 21-19
Global Change
screen



UPDATE SUMMER AND WINTER ADDRESSES

The Contacts List Manager screen has two other options, **Update Summer and Winter Addresses** and **View Mailing Log**. If you use both primary and secondary addresses for your contacts as summer and winter addresses, you can make sure the program will use the appropriate address based on the date you are doing your mailing by clicking the **Update Summer and Winter Addresses** button. It will make sure the correct address is being used for a mailing being sent today, based on the dates entered next to the Secondary field on the contact records.

VIEW MAILING LOG

To view a list of mailings sent from PastPerfect, click the **View Mailing Log** button. The screen in Figure 21-20 will appear. The Mailing Log is updated when a letter or mailing label is printed, an email is sent, or a list is exported to Excel, and you select **Yes** at the Add Entry to Mail & Contact Log screen.

TIP

To make sure your mailings are included in the Mail & Contact Log, be sure to click Yes on the Add Entry to Mail & Contact Log screen which appears after you print a letter, label, envelope, send an email, or export a list of contacts to Excel.

Figure 21-20
Mail & Contact
Log screen

Entry#	Date / Time	By	Type	To	Description
44	01/26/2009 05:31 PM	MLP	16 Letters	Active Memberships	Feb Renewal Letters
43	11/30/2008 02:26 PM	MLP	32 Letters	All Contacts	2009 Annual Fund Solicitation
42	08/22/2007 12:00 AM	RLH	Manual Entry	Brian L. Gibson, VP Operations	Sent use fee schedule
41	08/22/2007 12:00 AM	RLH	Manual Entry	Juanita Estevez	Scheduled an appointment
40	08/22/2007 12:00 AM	RLH	Manual Entry	Juanita Estevez	Mailed letter
39	08/22/2007 10:45 AM	RLH	4 Letters	Explorer's Club Dance	Ltr-Explorer's Club Dance - Invitatio
38	08/22/2007 10:27 AM	RLH	27 Letters	Exhibit Opening List	Ltr-Exhibit Opening - Local Artists
37	08/22/2007 09:58 AM	RLH	27 Labels	Exhibit Opening List	Art of Chester County Exhibit
36	08/22/2007 12:00 AM	RLH	Manual Entry	Barbara E. Fitzgibbon	Spoke with contact
35	04/30/2006 02:00 AM	RLH	Manual Entry	Leo Feldstein	Discuss insurance value of possib
34	08/17/2007 12:02 PM	MLP	21 Labels	Director's Circle Dinner List	Print Mailing Labels
33	08/17/2007 12:00 PM	MLP	21 Letters	Director's Circle Dinner List	Ltr-Director's Circle Dinner Invitatio
32	04/16/2007 12:00 AM	NRP	Manual Entry	Jennifer Grimes	Spoke with contact while she was i
31	05/25/2006 09:46 AM	rjh	3 Letters	Membership Renewal List	Ltr-Annual Meeting Announcement
30	07/08/2004 10:23 AM	MLP	17 Letters	Volunteers	Ltr-Annual Meeting Announcement
29	07/08/2004 10:21 AM	MLP	1 Letter	Melissa Potter	Ltr-Annual Meeting Announcement
28	07/08/2004 10:21 AM	MLP	1 Letter	Neil Packwood, Manager	Ltr-Annual Meeting Announcement
27	07/08/2004 10:21 AM	MLP	1 Letter	Pamela Chase Meyers	Ltr-Annual Meeting Announcement
26	07/08/2004 10:21 AM	MLP	1 Letter	Barbara W. Margolis	Ltr-Annual Meeting Announcement
25	07/08/2004 10:21 AM	MLP	1 Letter	Hap Kramer	Ltr-Annual Meeting Announcement
24	07/08/2004 10:21 AM	MLP	1 Letter	Mr. & Mrs. Earl L. Hilton	Ltr-Annual Meeting Announcement
23	07/08/2004 10:21 AM	MLP	1 Letter	Jason Harvey, Director	Ltr-Annual Meeting Announcement
22	07/08/2004 10:21 AM	MLP	1 Letter	Henry T. Hanover	Ltr-Annual Meeting Announcement
21	07/08/2004 10:21 AM	MLP	1 Letter	Gail Gibson	Ltr-Annual Meeting Announcement
20	07/08/2004 10:21 AM	MLP	1 Letter	Barbara E. Fitzgibbon	Ltr-Annual Meeting Announcement
19	07/08/2004 10:21 AM	MLP	1 Letter	Leo Feldstein	Ltr-Annual Meeting Announcement
18	07/08/2004 10:20 AM	MLP	1 Letter	Annabeth Edwards	Ltr-Annual Meeting Announcement
17	07/08/2004 10:20 AM	MLP	1 Letter	Gary Easton	Ltr-Annual Meeting Announcement
16	07/08/2004 10:20 AM	MLP	1 Letter	Karen Slater	Ltr-Annual Meeting Announcement

Double click on entry to edit or view

Mass Delete Delete Print Exit

To view or edit the details of an entry, double click on the entry. You may also delete entries according to date, with the **Mass Delete** button or delete them one at a time.

To mass delete entries:

1. Click the **Mass Delete** button. Enter a date in the **Delete all Mail & Contact Log entries older than** field.
2. Click **OK**.
3. Click **Yes**.

To delete an individual entry, highlight the entry by clicking on it. Then click **Delete** and click **Yes**. You may also print the entire log by clicking the **Print** button at the bottom of the screen. Click **Exit** to return to the Contact Lists Manager screen.